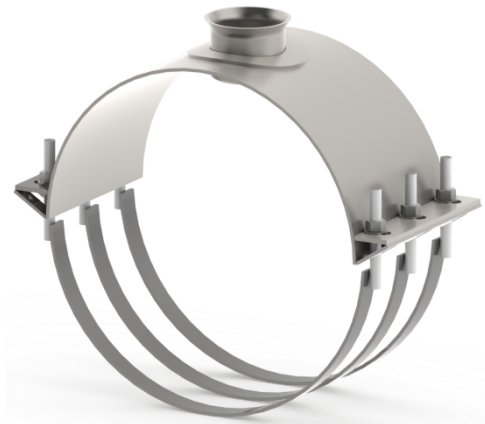
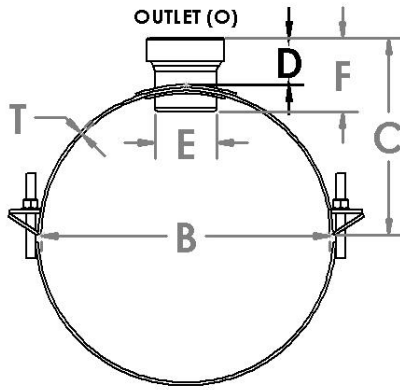
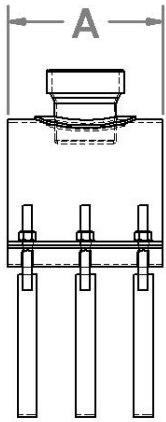


1096 Clamp On Saddles



Part No.	Nom. Pipe Size (B)	Outlet (O)	Dimensions						Approx. Weight
			A	C	D	E	F	T	
1096-183-03	18.300"	3" FIPT	10"	9.805"	3.50"	4.000"	4.875"	0.188"	33 lbs.
1096-183-04	18.300"	4" FIPT	10"	9.805"	3.50"	4.000"	5.250"	0.188"	35 lbs.
1096-183-06F	18.300"	6" FLG	10"	9.805"	4.75"	5.625"	5.750"	0.188"	44 lbs.
1096-183-08F	18.300"	8" FLG	12"	9.805"	4.75"	8.625"	5.750"	0.188"	57 lbs.
1096-183-10F	18.300"	10" FLG	15"	9.805"	4.75"	10.750"	5.750"	0.188"	61 lbs.
1096-187-03	18.700"	3" FIPT	10"	9.975"	3.50"	4.000"	4.875"	0.188"	33 lbs.
1096-187-04	18.700"	4" FIPT	10"	9.975"	3.50"	4.000"	5.250"	0.188"	35 lbs.
1096-187-06F	18.700"	6" FLG	10"	9.975"	4.75"	5.625"	5.750"	0.188"	44 lbs.
1096-187-08F	18.700"	8" FLG	12"	9.975"	4.75"	8.625"	5.750"	0.188"	57 lbs.
1096-187-10F	18.700"	10" FLG	15"	9.975"	4.75"	10.750"	5.750"	0.188"	61 lbs.
1096-204-03	20.400"	3" FIPT	10"	10.825"	3.50"	4.000"	4.875"	0.188"	36 lbs.
1096-204-04	20.400"	4" FIPT	10"	10.825"	3.50"	4.000"	5.250"	0.188"	37 lbs.
1096-204-06F	20.400"	6" FLG	10"	10.825"	4.75"	5.625"	5.750"	0.188"	46 lbs.
1096-204-08F	20.400"	8" FLG	12"	10.825"	4.75"	8.625"	5.750"	0.188"	59 lbs.
1096-204-10F	20.400"	10" FLG	15"	10.825"	4.75"	10.750"	5.750"	0.188"	63 lbs.
1096-220-03	22.047"	3" FIPT	10"	11.645"	3.50"	4.000"	4.875"	0.188"	39 lbs.
1096-220-04	22.047"	4" FIPT	10"	11.645"	3.50"	4.000"	5.250"	0.188"	40 lbs.
1096-220-06F	22.047"	6" FLG	10"	11.645"	4.75"	5.625"	5.750"	0.188"	49 lbs.
1096-220-08F	22.047"	8" FLG	12"	11.645"	4.75"	8.625"	5.750"	0.188"	63 lbs.
1096-220-10F	22.047"	10" FLG	15"	11.645"	4.75"	10.750"	5.750"	0.188"	67 lbs.
1096-248-03	24.803"	3" FIPT	10"	13.025"	3.50"	4.000"	4.875"	0.188"	41 lbs.
1096-248-04	24.803"	4" FIPT	10"	13.025"	3.50"	4.000"	5.250"	0.188"	43 lbs.





1096 Clamp On Saddles

1096-248-06F	24.803"	6" FLG	10"	13.025"	4.75"	5.625"	5.750"	0.188"	52 lbs.
1096-248-08F	24.803"	8" FLG	12"	13.025"	4.75"	8.625"	5.750"	0.188"	65 lbs.
1096-248-10F	24.803"	10" FLG	15"	13.025"	4.75"	10.750"	5.750"	0.188"	67 lbs.
1096-279-03	27.953"	3" FIPT	10"	14.605"	3.50"	4.000"	4.875"	0.188"	45 lbs.
1096-279-04	27.953"	4" FIPT	10"	14.605"	3.50"	4.000"	5.250"	0.188"	46 lbs.
1096-279-06F	27.953"	6" FLG	10"	14.605"	4.75"	5.625"	5.750"	0.188"	55 lbs.
1096-279-08F	27.953"	8" FLG	12"	14.605"	4.75"	8.625"	5.750"	0.188"	69 lbs.
1096-279-10F	27.953"	10" FLG	15"	14.605"	4.75"	10.750"	5.750"	0.188"	73 lbs.
1096-314-03	31.496"	3" FIPT	10"	16.375"	3.50"	4.000"	4.875"	0.188"	49 lbs.
1096-314-04	31.496"	4" FIPT	10"	16.375"	3.50"	4.000"	5.250"	0.188"	50 lbs.
1096-314-06F	31.496"	6" FLG	10"	16.375"	4.75"	5.625"	5.750"	0.188"	59 lbs.
1096-314-08F	31.496"	8" FLG	12"	16.375"	4.75"	8.625"	5.750"	0.188"	73 lbs.
1096-314-10F	31.496"	10" FLG	15"	16.375"	4.75"	10.750"	5.750"	0.188"	77 lbs.

- Body Material is constructed of 304 Stainless Steel conforming to ASTM A240.
- Outlet Material is constructed of 304 Stainless Steel Pipe conforming to ASTM A778/A312.
- Outlet Connection (O) is FIPT, Female Pipe Thread conforming to ASTM A351, Threads conform to ANSI B1.20.1
- Outlet Connection (O) is FLG, 1/2" Thick 304 Stainless Steel Plate Flange conforming to ASTM A182 w/ Drill Pattern to ASME/ANSI Class 150.
- Saddle Straps Material is 304 Stainless Steel conforming to ASTM A276 and 18-8 All Thread, with Hex Nut and Flat Washer.
- Gasket Seal Material is EPDM.
- Pressure Rating of 150 psi.
- Dimensions C, D, F may have variance of +/- 0.50" upon installation.

