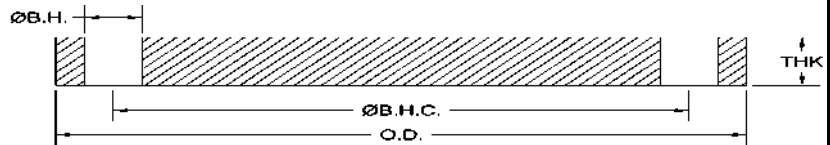


## 1028 BLIND FLANGE (300)



Examples: 4" Class F Blind  
 Carbon Part # 1028F-B04  
 304 Part# 1028F-S4-B04  
 316 Part# 1028F-S6-B04

Parts Available:  
 Meets ANSI class 300 pattern  
 Carbon Steel (C/S) AWWA C207  
 Stainless Steel (S/S) AWWA C228  
 304/304L and 316/316L

PART NO.	SIZE	OD	B.H.C. DIA.	B.H. DIA	#B.H.	THK	WEIGHT IN LBS.
1028F-B04	4"	10.00	7.88	0.88	8	1.13	23.60
1028F-B05	5"	11.00	9.25	0.88	8	1.21	30.90
1028F-B06	6"	12.50	10.62	0.88	12	1.31	42.90
1028F-B08	8"	15.00	13.00	1.00	12	1.31	62.10
1028F-B10	10"	17.50	15.25	1.13	16	1.50	95.50
1028F-B12	12"	20.50	17.75	1.25	16	1.63	143.40
1028F-B14	14"	23.00	20.25	1.25	20	1.94	214.90
1028F-B16	16"	25.50	22.50	1.38	20	2.14	291.70
1028F-B18	18"	28.00	24.75	1.38	24	2.25	369.80
1028F-B20	20"	30.50	27.00	1.38	24	2.33	458.80
1028F-B22	22"	33.00	29.25	1.38	24	2.50	580.60
1028F-B24	24"	36.00	32.00	1.63	24	2.69	737.90
1028F-B26	26"	38.25	34.50	1.88	28	3.00	911.00
1028F-B28	28"	40.75	37.00	1.88	28	3.13	1088.00
1028F-B30	30"	43.00	39.25	1.88	28	3.17	1233.30
1028F-B32	32"	45.25	41.50	1.88	28	3.32	1445.20
1028F-B34	34"	47.50	43.50	1.88	28	3.48	1668.60
1028F-B36	36"	50.00	46.00	2.13	32	3.67	1924.20
1028F-B38	38"	52.25	48.00	2.13	32	3.82	2195.00
1028F-B40	40"	54.25	50.25	2.13	36	3.98	2463.80
1028F-B42	42"	57.00	52.75	2.13	36	4.17	2864.70
1028F-B44	44"	59.25	55.00	2.13	36	4.34	3231.90
1028F-B46	46"	61.50	57.25	2.13	40	4.51	3628.70
1028F-B48	48"	65.00	60.75	2.13	40	4.78	4322.10