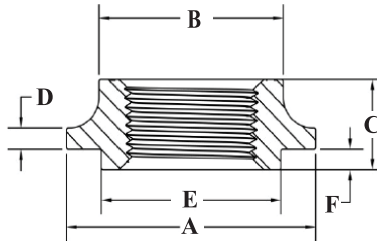


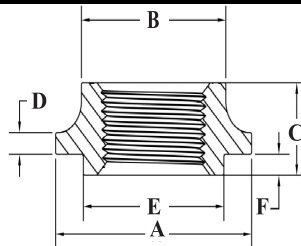
## WELD ON TANK FLANGES

X = 4 for 304 Stainless Steel  
 X = 6 for 316 Stainless Steel



### STAINLESS STEEL FLAT TYPE WITH PILOT

PART NO.	SIZE	WEIGHT IN LBS.	A	B	C	D	E	F
WTF-SX-0025	1/4"	0.12	1.500	1.000	0.500	0.140	0.968	0.125
WTF-SX-0375	3/8"	0.14	1.625	1.062	0.500	0.140	0.937	0.125
WTF-SX-0050	1/2"	0.18	1.812	1.118	0.625	0.156	1.156	0.156
WTF-SX-0075	3/4"	0.26	2.062	1.438	0.750	0.156	1.343	0.156
WTF-SX-0100	1"	0.40	2.375	1.750	0.830	0.195	1.703	0.188
WTF-SX-0125	1 1/4"	0.46	2.500	2.125	0.875	0.196	1.938	0.188
WTF-SX-0150	1 1/2"	0.62	3.031	2.375	0.875	0.204	2.312	0.187
WTF-SX-0200	2"	0.64	3.375	2.875	0.812	0.188	2.688	0.188
WTF-SX-0300	3"	1.10	4.625	3.938	1.000	0.219	3.688	0.188



### CARBON STEEL FLAT TYPE WITH PILOT

PART NO.	SIZE	WEIGHT IN LBS.	A	B	C	D	E	F
WTF-0012	1/8"	0.10	1.375	0.875	0.469	0.094	0.843	0.082
WTF-0025	1/4"	0.12	1.500	1.000	0.500	0.140	0.968	0.125
WTF-0375	3/8"	0.14	1.625	1.062	0.500	0.140	0.937	0.125
WTF-0050	1/2"	0.18	1.812	1.118	0.625	0.156	1.156	0.156
WTF-0075	3/4"	0.26	2.062	1.438	0.750	0.156	1.343	0.156
WTF-0100	1"	0.40	2.375	1.750	0.830	0.195	1.703	0.188
WTF-0125	1 1/4"	0.46	2.500	2.125	0.875	0.196	1.938	0.188
WTF-0150	1 1/2"	0.62	3.031	2.375	0.875	0.204	2.312	0.187
WTF-0200	2"	0.64	3.375	2.875	0.812	0.188	2.688	0.188
WTF-0250	2 1/2"	0.96	4.063	3.312	1.000	0.093	3.187	0.188
WTF-0300	3"	1.10	4.625	3.938	1.000	0.219	3.688	0.188
WTF-0350	3 1/2"	1.45	5.125	4.438	1.000	0.219	4.188	0.188
WTF-0400	4"	2.10	5.812	4.938	1.250	0.022	4.750	0.188