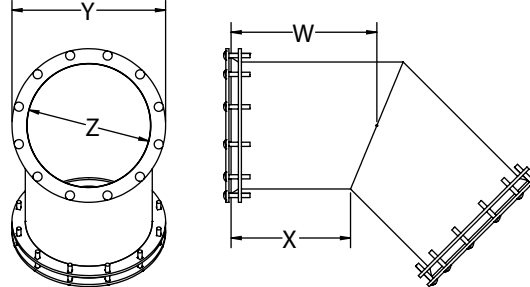


M&M WATER TIGHT 1065 45° ELL



1065 M&M WATER TIGHT 45° ELLS				
NOM. PIPE O.D. (Z)	PART NO.	INSERTION LENGTH (X)*	LENGTH (W)	WEIGHT IN LBS.
3.000"	1065-03D	9"	9.000"	17 lbs.
3.500"	1065-03I			17 lbs.
4.000"	1065-04D		10.000"	21 lbs.
4.500"	1065-04I			22 lbs.
5.000"	1065-05D	10"	11.000"	24 lbs.
5.563"	1065-05I			27 lbs.
6.000"	1065-06D			28 lbs.
6.625"	1065-06I			31 lbs.
6.140"	1065-06P			30 lbs.
8.000"	1065-08D			37 lbs.
8.625"	1065-08I			39 lbs.
8.160"	1065-08P			39 lbs.
10.000"	1065-10D		50 lbs.	
10.750"	1065-10I			52 lbs.
10.200"	1065-10P		53 lbs.	
12.000"	1065-12D			64 lbs.
12.750"	1065-12I		67 lbs.	
12.240"	1065-12P			68 lbs.
14.000"	1065-14D		74 lbs.	
15.300"	1065-15P			82 lbs.
16.000"	1565-16D		87 lbs.	
18.000"	1065-180D			98 lbs.
18.360"	1065-183P		99 lbs.	
18.700"	1065-187P			104 lbs.
20.000"	1065-20D	112 lbs.		
20.400"	1065-20P		114 lbs.	
22.047"	1065-21P	130 lbs.		
24.000"	1065-24D		142 lbs.	
24.803"	1065-24P	146 lbs.		
27.953"	1065-27P		181 lbs.	

*MINIMUM INSERTION LENGTH