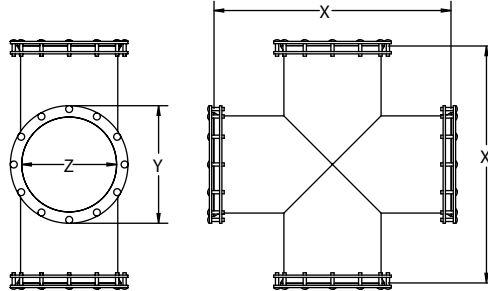


M&M WATER TIGHT 1045 CROSS



1045 M&M WATER TIGHT CROSS			
NOM. PIPE O.D. (Z)	PART NO.	LENGTH (X)	WEIGHT IN LBS.
3.000"	1045-03D	20.000"	34 lbs.
3.500"	1045-03I	20.000"	34 lbs.
4.000"	1045-04D	22.000"	39 lbs.
4.500"	1045-04I	22.000"	41 lbs.
5.000"	1045-05D	24.000"	45 lbs.
5.563"	1045-05I	24.000"	50 lbs.
6.000"	1045-06D	26.000"	53 lbs.
6.625"	1045-06I	26.000"	59 lbs.
6.140"	1045-06P	26.000"	56 lbs.
8.000"	1045-08D	28.000"	75 lbs.
8.625"	1045-08I	28.000"	78 lbs.
8.160"	1045-08P	28.000"	77 lbs.
10.000"	1045-10D	30.000"	97 lbs.
10.750"	1045-10I	30.000"	102 lbs.
10.200"	1045-10P	30.000"	123 lbs.
12.000"	1045-12D	32.000"	122 lbs.
12.750"	1045-12I	32.000"	126 lbs.
12.240"	1045-12P	32.000"	129 lbs.
14.000"	1045-14D	34.000"	143 lbs.
15.300"	1045-15P	36.000"	155 lbs.
16.000"	1045-16D	36.000"	164 lbs.
18.000"	1045-180D	38.000"	199 lbs.
18.360"	1045-183P	38.000"	201 lbs.
18.700"	1045-187P	38.000"	209 lbs.
20.000"	1045-20D	40.000"	232 lbs.
20.400"	1045-20P	40.000"	235 lbs.
22.047"	1045-21P	46.000"	266 lbs.
24.000"	1045-24D	48.000"	303 lbs.
24.803"	1045-24P	48.000"	310 lbs.
27.953"	1045-27P	52.000"	369 lbs.